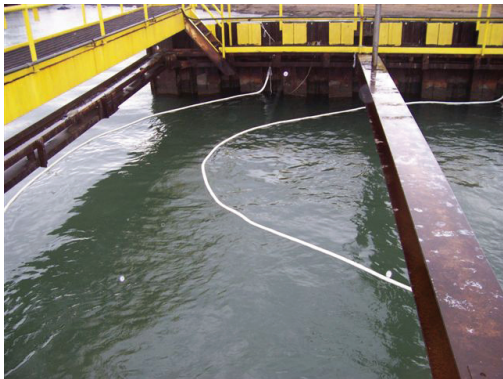




## C.I.Agent Marine Boom



**C.I. Agent Marine Boom**



**C.I.Agent Marine Booms used for polishing sheen after out-fall at utility power plant.**

### PRODUCT DESCRIPTION:

C.I.Agent Marine Boom is a spill containment device for hydrocarbon spills in waters that may have currents, as well as calm waters such as harbors, streams, rivers, and tidal areas. The C.I.Agent Marine Boom is approximately 3" in diameter and is filled with a proprietary blend of polymers that contain larger granules to increase the solidification rate throughout the boom. The larger C.I.Agent Granules also increase the efficiency of the boom with heavier oils while maintaining the ability to polish sheen.

### PRODUCT APPLICATIONS:

C.I.Agent Marine Boom is ideal for use in harbor areas or in marinas where there are fuel docks and where currents or tides are present. The C.I.Agent Marine Boom can be placed in scuppers to prevent hydrocarbon run-off from the decks of commercial vessels and in engine rooms or bilges to remove oil without the need to process any water. This device can also be used on land applications to prevent hydrocarbons from entering storm drains.

### PERFORMANCE SPECIFICATIONS:

The outer skin is made of white (or black) spun-bound mesh and filled with C.I.Agent Granules. The Marine Boom is capable of containing over 300 gallons of diesel fuel.

### BENEFITS:

- C.I.Agent Marine Boom is reusable until the loose polymers inside become solid.
- Hydrocarbons will not drip or leach out.
- C.I.Agent Marine Booms can be disposed of in most landfills eliminating the "Cradle to Grave Liability" and the costs associated with hazardous waste disposal.\*

### AVAILABILITY:

C.I.Agent Marine Booms are available in 5 ft. and 10 ft. lengths. As with all C.I.Agent Solutions' products, custom sizes are available for specified applications upon customer request.

\*Always check with Local, State, and Federal Regulations prior to disposal.

**For additional information call C.I.Agent Solutions.**

